



Castilla-La Mancha

**Ministry of Education, Culture, and Sports
Castilla- La Mancha
SPAIN**



ABOUT: CASTILLA- LA MANCHA

Location:
In the center of Spain.



Its iconic cities: Toledo and
Cuenca
(UNESCO Worlds Heritage
site), or Alcázar de San Juan,
among others.

One of the largest autonomous
communities, consisting of 5
provinces: Toledo, Ciudad Real,
Cuenca, Albacete, and
Guadalajara.



Castilla-La Mancha

About ...

CONSEJERÍA DE EDUCACIÓN, CULTURA Y DEPORTES

(Ministry of Education, Culture, and Sports)

is responsible for overseeing and managing areas related to education, cultural affairs, sports, and youth programs within the region.

[LEARN MORE](#)





Castilla-La Mancha



CONSEJERÍA DE EDUCACIÓN, CULTURA Y DEPORTES
(Ministry of Education, Culture, and Sports)

Its main functions can be summarized as follows:

Education:

- **Management of public and charter education systems, including both early childhood, primary, secondary, VET and higher education institutions.**
- **Curriculum development and adaptation of educational content to regional needs.**
- **Teacher training and professional development.**
- **Education quality control and inspection to ensure high standards in teaching.**
- **Administration of educational centers, including the management of resources, personnel, and facilities.**
- **Grants and scholarships for students.**
- **Coordination with universities and other higher education institutions.**
- **Inclusive education policies, ensuring access for students with special educational needs.**



Castilla-La Mancha



CONSEJERÍA DE EDUCACIÓN, CULTURA Y DEPORTES
(Ministry of Education, Culture, and Sports)

Culture:

- Protection and promotion of cultural heritage, including historical monuments, museums, archives, and libraries
- Support for cultural activities, such as theater, music, and arts.
- Promotion of regional identity through cultural programs and initiatives.
- Subsidies and grants for artists and cultural entities.
- Organization of cultural events and collaborations with cultural institutions.



Castilla-La Mancha



CONSEJERÍA DE EDUCACIÓN, CULTURA Y DEPORTES
(Ministry of Education, Culture, and Sports)

Sports

- Development of regional sports programs and policies, promoting sports practice at all levels (amateur and professional)
- Support for sports federations, clubs, and athletes.
- Management of sports facilities and infrastructures.
- Promotion of physical activity and healthy lifestyles.
- Training and certification of sports professionals.
- Inclusion and accessibility in sports for all citizens, including people with disabilities.



Castilla-La Mancha



CONSEJERÍA DE EDUCACIÓN, CULTURA Y DEPORTES
(Ministry of Education, Culture, and Sports)

Youth Programs

- Youth employment and development programs.
- Promotion of youth participation in social, political, and cultural life.
- Support for young entrepreneurs and innovators.
- Youth centers and services, offering resources for education, culture, and leisure activities.

Which place our institution occupy in the Regional Government Organizational Structure?



EDUCATIONAL, CULTURE AND
SPORT REGIONAL
GOVERNMENT

VICECONSEJERÍA DE
EDUCACIÓN,
UNIVERSIDADES E
INVESTIGACIÓN

VICECONSEJERÍA DE
CULTURA Y DEPORTES

IGE

GENERAL DIRECTORATE
OF HUMAN RESOURCES

GENERAL DIRECTORATE OF
EDUCATIVE PROGRAMS AND
INCLUSION

GENERAL DIRECTORATE OF
EDUCATIONAL INNOVATION
AND CENTRES

VET GENERAL
DIRECTORATE

GENERAL DIRECTORATE OF
UNIVERSITIES, RESEARCH
AND INNOVATION



About: IGE.

The General Inspectorate is established as an organization within the central services. It is composed of the General Inspector and the Central Inspectors.

Educational inspectorate (EI) is an organization that supervise and evaluate the functioning of educational centers in Castilla-La Mancha (Spain)

Being under the Vice-Minister of Education , we also work as an advisory council to different educative programs, although our main work is organizing the planning, training, and evaluation of the inspection provincial departments.

[LEARN MORE](#)





Castilla-La Mancha

EI

Castilla-La Mancha

**CARTA DE
SERVICIOS**

Inspección de
Educación de
Castilla-La Mancha

Our Service Charter.

01

Supervise, advise, evaluate, and control, from a pedagogical and organizational perspective, the functioning of educational centers.

02

Supervise teaching practices and leadership functions, and collaborate in their continuous improvement.

03

Participate in the evaluation of the educational system and its constituent elements.

04

Advise, guide, and inform the various sectors of the educational community in the exercise of their rights and the fulfillment of their obligations.

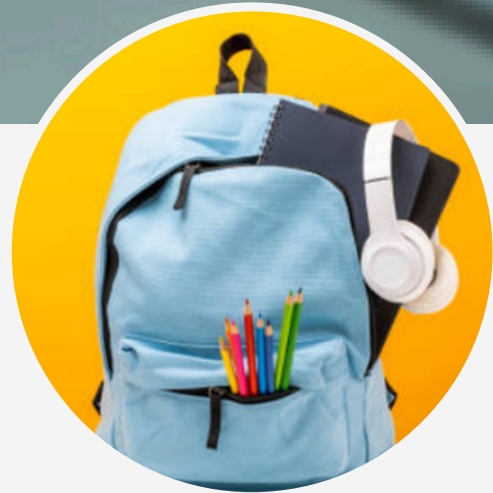
05

Guide management teams in the adoption and monitoring of measures that promote coexistence, participation of the educational community, and conflict resolution, promoting and participating, when necessary, in mediation processes.



Castilla-La Mancha

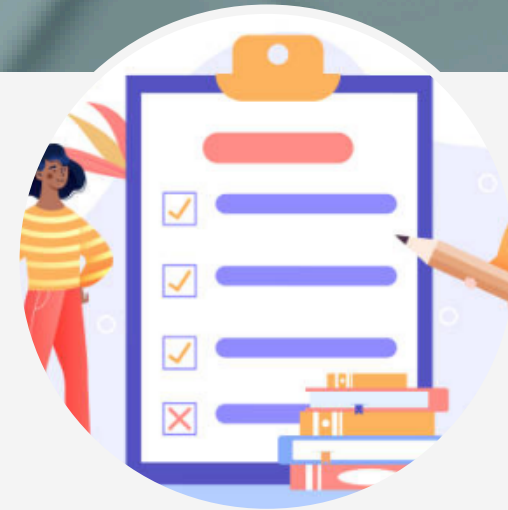
Our subject.



Early school dropout.



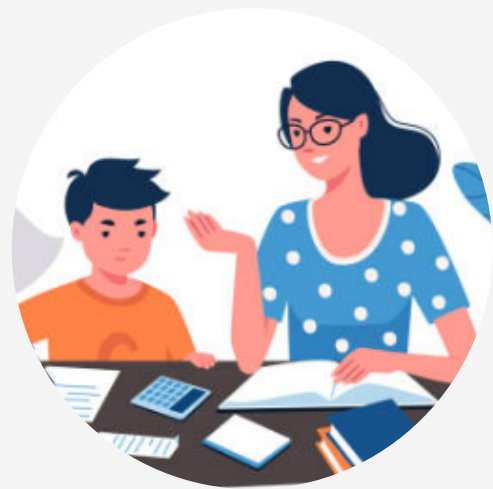
Teachers performance.



School evaluation.



Improvement VET.



Students support programmes.



Internal and external assesment.



Wellbeing and positive school enviroment.



Digital Competece, Educative Research and Innovation



Castilla-La Mancha

Current

Current and Future Erasmus+ programs



Future

- **Highlight the Importance of International Collaboration**
- **Improve school participation in new spaces and methodologies.**

- **Accreditation for Secondary Education (SCH) CONSORTIUM**

2020-1-ES01-KA120-SCH-000095968

- **Accreditation for Vocational Education and Training (VET)**

2020-1-ES01-KA120-VET-000095635

In Castilla-La Mancha, educational institutions, including secondary schools (SCH) and vocational education training (VET) centers, can participate in the Erasmus+ program through consortiums.





Castilla-La Mancha

Why Erasmus programme?



Erasmus is a powerful tool for educational institutions seeking to improve teaching quality, foster international collaboration.

The program aligns with the European Union's educational standards and priorities, helping institutions improve their curricula to meet international benchmarks.





Castilla-La Mancha

GET IN TOUCH

Message Us

- inspeccion.general@jccm.es

Mailing Address

Bulevar Río Alberche s/n
45007- Toledo- Spain

Visit Our Website

<https://www.educa.jccm.es/es>

